

HW450/650

SINGLE SIDE 60-DEGREE HEAVY DUTY DOUBLE COLUMN MITER CUTTING BAND SAW

FEATURES

- Double column design. With this high rigidity design, high speed and high precision cutting can be achieved.
- Hydraulically controlled carbide blade guides assure the blade is held taut for fast, accurate cuts.
- Oil mist lubrication system assures long blade life by lubricating the blade, causing heat to be absorbed by the chip and not the material or blade.
- Full stroking vise jaws and a vertical clamp devise assure the workpiece is secure and eliminate excessive vibration during the cut, providing better blade life and cleaner cuts.



Cutting Capacity
□ 650 x 420 mm



Saw Blade Type
TCT / Bi-Metal



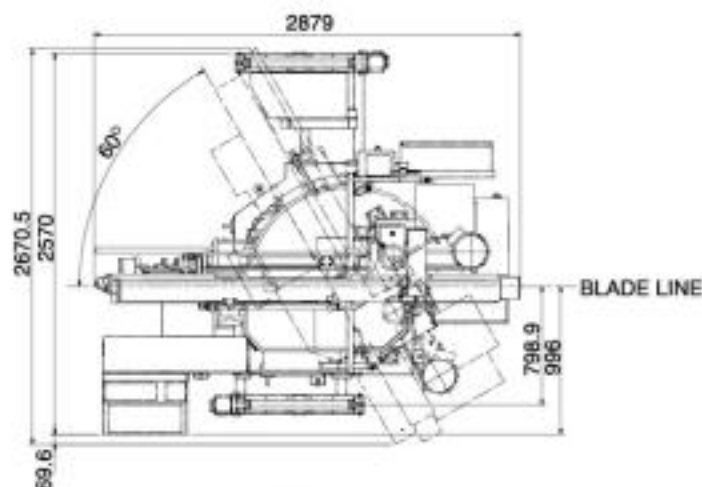
Saw Blade Dimension
5,450 x 41 x 1.3 mm

www.everising.com

HW450/650

SINGLE SIDE 60-DEGREE HEAVY DUTY DOUBLE COLUMN MITER CUTTING BAND SAW

Layout Drawing



Character

1 Hold Down Device

As a standard feature, there is a top clamp which further stabilizes the work material. This reduces chatter and extends blade life.

2 Easy Miter Angle Setting

Using a simple button, the operator can set the miter angle. Angle position is easy to read with digital display, minimizing operation errors.

3 Loading / Unloading Has Been Made Easier

From the operator panel, the operator can move the material via the electrically-driven roller system.

4 Easy-to-Use Centralized Operation Panel

The centralized operator panel contains all the operational switches needed in one convenient location. Open and close of vise, feeding material, turning angle, making a slit, etc. can be all performed on the operation panel.

5 Oil Mist Coolant System

The oil mist coolant system assures long blade life by lubricating the blade causing heat to be absorbed by the chip and not the material or blade.



Specification

Capacity	90°	<input type="radio"/> 450 mm <input type="checkbox"/> 650 mm W x 420 mm H
	-45°	<input type="radio"/> 410 mm <input type="checkbox"/> 410 mm W x 420 mm H
	-60°	<input type="radio"/> 260 mm <input type="checkbox"/> 260 mm W x 420 mm H
Blade Speed	20 - 80 m/min (inverter variable speed)	
Blade Size	5450 x 41 x 1.3 mm	
Angle Swivel	Power angle setting with LED display	

Motor	Saw Blade	5 HP
	Hydraulic Pump	2 HP
Blade Tension	Hydraulic	
Table Height	730 mm	
Vise Clamping Type	Hydraulic (full stroke)	
Floor Space	2950 mm W x 2700 mm L	
Weight	4300 kg	

EVERISING

CAT. NO.: 10402ED1

EVERISING MACHINE CO.

No.1 Jingke 1st Road, Nantun District, Taichung 406, Taiwan

Tel. +886-4-23505300 • Fax +886-4-23505420 • evms@everising.com.tw • www.everising.com